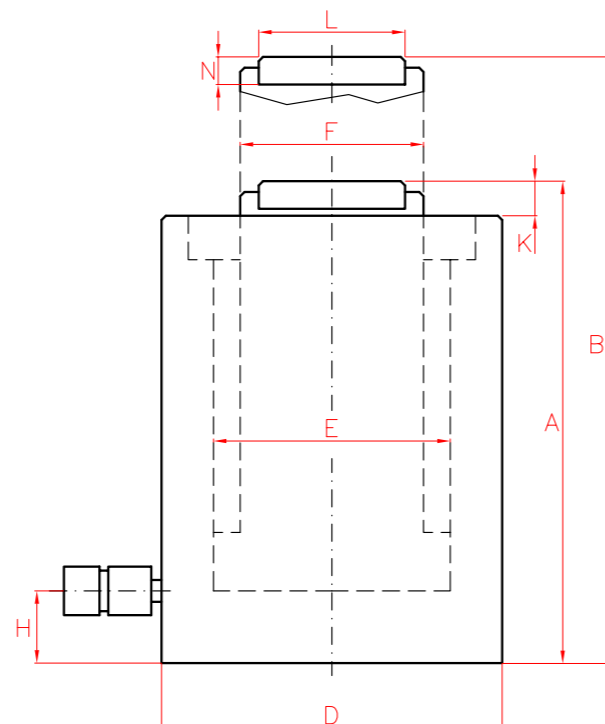


SINGLE ACTING HIGH TONNAGE CYLINDERS, LOAD RETURN

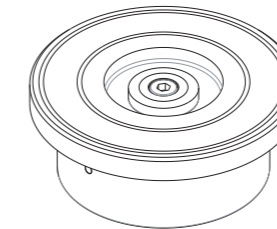


- ✓ Capacity from 50 to 1.000 Tn, stroke up to 300 mm.
- ✓ Load return.
- ✓ Mechanical end of stroke avoids over travel at full pressure.
- ✓ Models available up to 2.000 Tn lifting capacity per cylinder as special.
- ✓ Other strokes available upon request.



OPTIONAL TILTING SADDLES

Model	Cylinder
CATS50	SPC050
CATS100	SPC100
CATS150	SPC140
CATS200	SPC220
CATS300	SPC300
CATS400	SPC400
CATS500	SPC500
CATS600	SPC600
CATS800	SPC800
CATS1000	SPC1000



S/A LOAD RETURN CYLINDERS



Type	SPC
Capacity	50 - 1.000 Tn
Stroke	50 - 300 mm
Max. pressure	700 bar

SPC CYLINDERS

Capacity	Stroke	Model	Oil Cap.	A	B	D	E	F	H	K	L	N	Area	Weight
Tn (kN)	mm	LARZEP	cm ³	mm	mm	mm	mm	mm	mm	mm	mm	mm	cm ²	kg
51 (496)	150	SPC05015	1.063	306	456	125	95	75	25	6	50	20	70,9	26
	300	SPC05030	2.126	461	761	125	95	75	25	6	50	20	70,9	38
95 (929)	150	SPC10015	1.991	296	446	170	130	100	30	6	71,5	20	132,7	46
	300	SPC10030	3.982	451	751	170	130	100	30	6	71,5	20	132,7	67
144 (1.407)	50	SPC14005	1.005	213	263	210	160	110	40	6	94	20	201,1	53
	150	SPC14015	3.016	318	468	210	160	110	40	6	94	20	201,1	74
	300	SPC14030	6.032	478	778	210	160	110	40	6	94	20	201,1	104
224 (2.199)	50	SPC22005	1.571	233	283	260	200	140	50	6	113	25	314,2	90
	150	SPC22015	4.712	333	483	260	200	140	50	6	113	25	314,2	120
	300	SPC22030	9.425	498	798	260	200	140	50	6	113	25	314,2	169
310 (3.036)	50	SPC30005	2.169	251	301	305	235	200	55	8	140	30	433,7	137
	150	SPC30015	6.506	357	507	305	235	200	55	8	140	30	433,7	189
	300	SPC30030	13.012	512	812	305	235	200	55	8	140	30	433,7	263
409 (4.008)	50	SPC40005	2.863	275	325	350	270	220	65	10	159,5	30	572,6	197
	150	SPC40015	8.588	382	532	350	270	220	65	10	159,5	30	572,6	262
	300	SPC40030	17.177	538	838	350	270	220	65	10	159,5	30	572,6	357
522 (5.114)	50	SPC50005	3.653	305	355	400	305	250	75	10	179,5	30	730,6	287
	150	SPC50015	10.959	410	560	400	305	250	75	10	179,5	30	730,6	371
	300	SPC50030	21.918	566	866	400	305	250	75	10	179,5	30	730,6	496
611 (5.987)	50	SPC60005	4.276	315	365	430	330	270	80	10	195	30	855,3	342
	150	SPC60015	12.829	420	570	430	330	270	80	10	195	30	855,3	440
	300	SPC60030	25.659	576	876	430	330	270	80	10	195	30	855,3	583
831 (8.149)	50	SPC80005	5.821	335	385	505	385	320	95	10	225	30	1.164,2	504
	150	SPC80015	17.462	446	596	505	385	320	95	10	225	30	1.164,2	649
	300	SPC80030	34.925	606	906	505	385	320	95	10	225	30	1.164,2	858
1.085 (10.644)	50	SPC100005	7.603	365	415	570	440	340	105	10	250	30	1.520,5	696
	150	SPC100015	22.808	476	626	570	440	340	105	10	250	30	1.520,5	869
	300	SPC100030	45.616	636	936	570	440	340	105	10	250	30	1.520,5	1.116