

**SINGLE ACTING HOLLOW PISTON CYLINDERS, SPRING RETURN**



- ✓ Capacity from 12 to 100 Tn, stroke up to 150 mm.
  - ✓ Spring return, hollow piston.
  - ✓ For push and pull applications: Tensioning cables and bolts, pulling sleeves and bearings.
  - ✓ Body and saddle black nitrided to improve corrosion and wear resistance, except 12 Tn models.
  - ✓ Hollow hard chrome-plated piston.
  - ✓ Collar threads, piston end thread and base holes for easy fixing.
  - ✓ Interchangeable with our complete puller range.
  - ✓ Hollow plain saddle as standard.
- Optional solid or threaded saddles available. Page 118.
- ✓ Hollow cylinders also available in double acting DH and aluminium single and double acting SAH and DAH.

Capacity		Stroke	Model	Oil Cap.	A	B	C
Tn	kN	mm	LARZEP	cm <sup>3</sup>	mm	mm	mm
12	121	40	SH01204	70	124	164	21
		76	SH01208	134	176	252	21
		150	SH01215	264	300	450	21
22	217	50	SH02205	158	165	215	27
		76	SH02208	240	203	279	27
		150	SH02215	474	318	468	27
30	302	64	SH03006	281	197	261	34
		150	SH03015	660	322	472	34
60	578	76	SH06008	640	223	299	56
		153	SH06015	1.288	315	468	56
100	1.019	80	SH10008	1.187	282	362	81
		150	SH10015	2.225	367	517	81



HOLLOW PISTON CYLINDERS



Type	<b>SH</b>
Capacity	12 - 100 Tn
Stroke	40 - 150 mm
Max. pressure	700 bar

**SAH**  
Lightweight Aluminium  
Hollow Piston Cylinders

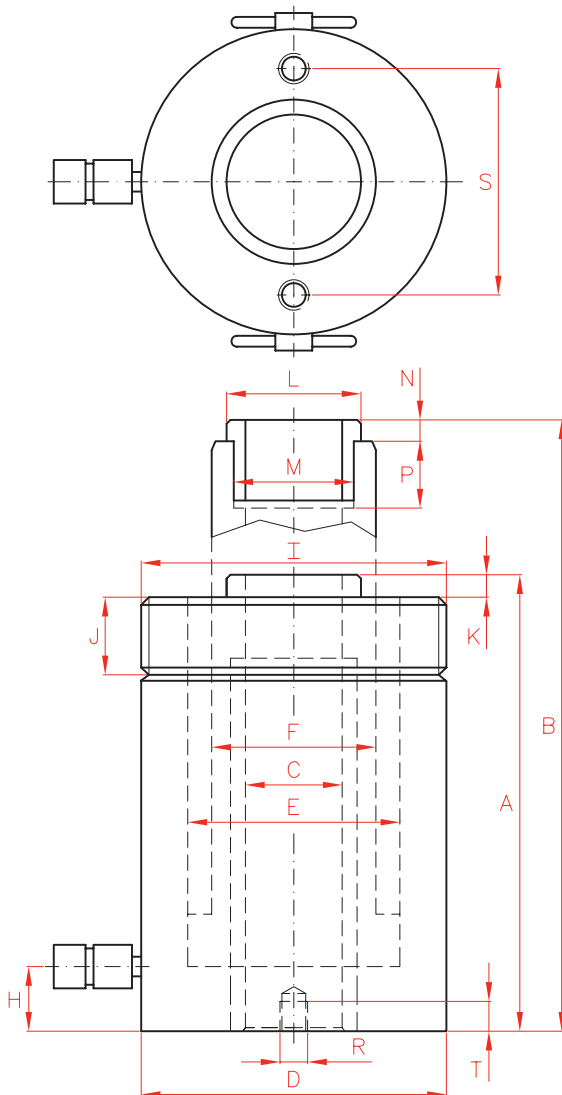
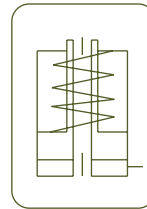


P.18

**DH**  
Double Acting Hollow Piston Cylinders



P.68



	D	E	F	H	I	J	K	L	M	N	P	R	S	T	Area	Weight	Model
	mm	mm	mm	mm	UN	mm	mm	mm	UN	mm	mm	UN	mm	mm	cm <sup>2</sup>	kg	LARZEP
	75	55	40	19	2 3/4"-16	30	3	34	M28*1,5	7	18	5/16"-18	51	12	18	3,4	<b>SH01204</b>
	75	55	40	19	2 3/4"-16	30	3	34	M28*1,5	7	18	5/16"-18	51	12	18	4,6	<b>SH01208</b>
	75	55	40	19	2 3/4"-16	30	3	34	M28*1,5	7	18	5/16"-18	51	12	18	7,6	<b>SH01215</b>
	105	75	56	23	3 7/8"-12	38	3	48	1 9/16"-16	8	20	3/8"-16	83	15	32	8,6	<b>SH02205</b>
	105	75	56	23	3 7/8"-12	38	3	48	1 9/16"-16	8	20	3/8"-16	83	15	32	11,5	<b>SH02208</b>
	105	75	56	23	3 7/8"-12	38	3	48	1 9/16"-16	8	20	3/8"-16	83	15	32	16,4	<b>SH02215</b>
	120	90	68	26	4 1/2"-12	42	4	55	1 13/16"-16	9	22	3/8"-16	92	17	44	13,2	<b>SH03006</b>
	120	90	68	26	4 1/2"-12	42	4	55	1 13/16"-16	9	22	3/8"-16	92	17	44	18,5	<b>SH03015</b>
	160	125	95	31	6 1/4"-12	48	4	80	2 3/4"-16	12	22	1/2"-13	130	14	84	26,0	<b>SH06008</b>
	160	125	95	31	6 1/4"-12	48	4	80	2 3/4"-16	12	22	1/2"-13	130	14	84	38,0	<b>SH06015</b>
	213	170	130	37	8 3/8"-12	60	5	116	4"-16	13	25	5/8"-11	178	19	148	58,0	<b>SH10008</b>
	213	170	130	37	8 3/8"-12	60	5	116	4"-16	13	25	5/8"-11	178	19	148	79,0	<b>SH10015</b>