

ACCESSORIES



LARZEP offers a wide range of accessories to optimize our products performance: Hoses, Couplers, Tilting Saddles, Hollow Saddles, Flow Control Valves, Fittings, Manifolds and Pressure Gauges are available as standard.

- ✓ Wide range of standard hoses up to 10 metres and 720 bar working pressure.
- ✓ Low-flow and high-flow quick couplers available as standard.
Working pressure: 700 bar and 1.000 bar.
- ✓ Wide range of flow control valves: snubber valves, flow regulating valves with 2 or 4 outlets, manually operated check valve, single way flow regulating valve, check valve, pressure relief valve and pilot operated check valve.
- ✓ Tilting saddles highly recommended for side load application.
Hollow saddles used in hollow piston cylinders specially in pulling and tensioning operations.
- ✓ Wide range of fittings and manifolds for multiple applications.
- ✓ Glycerine filled pressure gauges for monitoring working pressure and force.
- ✓ Digital pressure gauge for monitoring working pressure.



ACCESSORIES



Models	Accessories type		Page
AP	Hydraulic Hoses		84
AZ89	Hydraulic Oil		85
AZ3	Hydraulic Couplers		86
AZ5	Flow Control Valves		88
AZ04 - AZ05 CATS	Saddles		90
AZ1	Fittings and Manifolds		92
AV - AVD - AY	Pressure Gauges		94

HYDRAULIC HOSES

- ✓ 4:1 safety factor.
- ✓ Wide range of standard hoses. Hoses can be supplied in any length on request.
- ✓ Rubber guard on both ends.
- ✓ 3/8"-NPT thread on each end. Can be supplied with couplers on one or both ends.
- ✓ Internal diameter 6,4 mm. Oil capacity: 35 cm³ per metre.
- ✓ Minimum bending radius: 115 mm.

**WARNING**

**Never disconnect the hose when the system is pressurized.
Never exceed the maximum working pressure of the hose.**



Apply 2 rounds of Teflon around all 3/8" NPT threads of the system, in the thread direction, leaving the first thread uncovered to prevent the tape breaking and entering the hydraulic system. Torque: 80 Nm.



AZ3

Coupler 3/8"-18 NPT



P.86



Type

AP - AZ

Capacity

0,8 - 10 m length

Max. pressure

700 bar

MAXIMUM WORKING PRESSURE 700 BAR

Int. ø mm	End		Pressure bar	Length						
	1	2		0,8 m	1,5 m	2 m	3 m	4 m	6 m	10 m
6,4	3/8"-NPT	3/8"-NPT	700	AP2008	AP2015	AP2020	AP2030	AP2040	AP2060	AP2100
6,4	3/8"-NPT	AZ3120	700	AP2008G	AP2015G	AP2020G	AP2030G	AP2040G	AP2060G	AP2100G
6,4	AZ3120	AZ3120	700	AP2008G2	AP2015G2	AP2020G2	AP2030G2	AP2040G2	AP2060G2	AP2100G2



- ✓ Highly refined quality oil.
- ✓ Additives to enhance film strength.
- ✓ Anti-wear properties.
- ✓ Anti-corrosion characteristics.
- ✓ Extreme pressure characteristics.
- ✓ Better conservation of the hydraulic circuits.

HYDRAULIC OIL

Model	Capacity (l)	For use with
AZ8901	5	Hand Pumps, Bottle Jacks
AZ8902	5	Powerpacks

HYDRAULIC COUPLERS



- ✓ Low-flow and high-flow couplers, from 6 to 40 litres/min.
- ✓ 700 and 1.000 bar couplers have 3/8"-18 NPTF thread.
- ✓ Male and female couplers can be supplied separately.
- ✓ Steel dust cup available for AZ3120, AZ3140 and AZ3141 couplers.
- ✓ AZ3321, AZ3325, AZ3341 and AZ3345: ball quick couplers to guarantee easy and quick connection formerly used in cutters.
- ✓ AZ3120, AZ3140 and AZ3141: standard high-flow couplers.
- ✓ AZ3220 and AZ3240: low-flow couplers. Only used in legacy Maintenance Sets.
- ✓ All standard cylinders are supplied with AZ3140 female coupler.
- ✓ All cutters are supplied with AZ3140 female coupler.



WARNING

**Never disconnect the hose when the system is pressurized.
Never exceed the maximum working pressure of the hose.**



Apply 2 rounds of Teflon around all 3/8" NPTF threads of the system, in the thread direction, leaving the first thread uncovered to prevent the tape breaking and entering the hydraulic system. Torque: 80 Nm.



HYDRAULIC COUPLERS



Type **AZ3**

Capacity **6 - 40 l/min**

Max. pressure **700 - 1.000 bar**

Steel dust cap available:
AZ3144 for female couplers AZ3140 and AZ3141



Rubber dust cap AZ3145 available
to suit AZ3120, AZ3140 and AZ3141 couplers



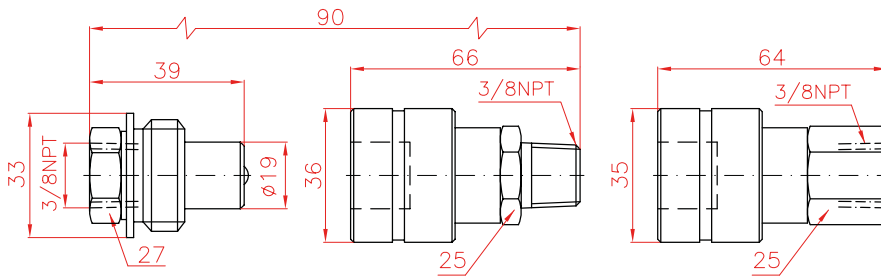
AZ3321 and AZ3325 male couplers are connectable with AZ3341 and AZ3345 female couplers

HIGH-FLOW COUPLERS 700 BAR

AZ3120

AZ3140

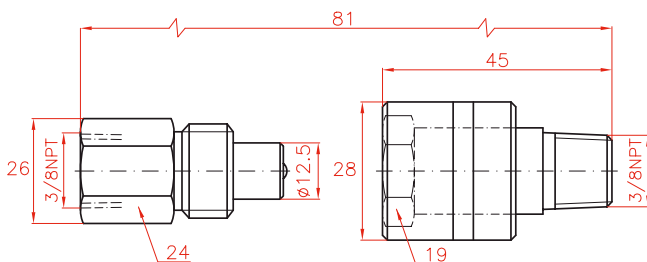
AZ3141



LOW-FLOW COUPLERS 700 BAR

AZ3220

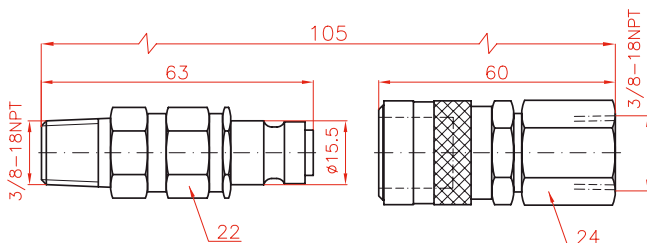
AZ3240



1.000 BAR BALL COUPLERS

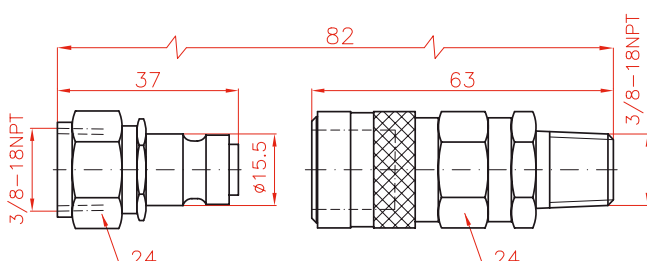
AZ3321

AZ3341



AZ3325

AZ3345



Flow l/min	Coupling	Model	Thread	Pressure
		LARZEP	NPTF	bar
40	Male	AZ3120	Female 3/8"	700
	Female	AZ3140	Male 3/8"	700
	Female	AZ3141	Female 3/8"	700
7	Male	AZ3220	Female 3/8"	700
	Female	AZ3240	Male 3/8"	700
6	Male	AZ3321	Male 3/8"	1.000
	Male	AZ3325	Female 3/8"	1.000
	Female	AZ3341	Female 3/8"	1.000
	Female	AZ3345	Male 3/8"	1.000

FLOW CONTROL VALVES



Model	SNUBBER VALVE	Symbol	
AZ5121	<p>Used for flow control and load holding when closed. Also suitable for use as a gauge snubber.</p>		

Model	MANIFOLD WITH FLOW REGULATING VALVE, 2 OUTLETS	Symbol	
AZ5122	<p>Used for flow control of two outlets from one pressure source.</p>		

Model	MANIFOLD WITH FLOW REGULATING VALVE, 4 OUTLETS	Symbol	
AZ5124	<p>Used for flow control of four outlets from one pressure source.</p>		



- ✓ All flow and pressure control valves are designed for 700 bar working pressure.
- ✓ All valves have 3/8"-NPT pressure ports to prevent leakage.



Type **AZ5**

Capacity -

Max. pressure **700 bar**

Model	MANUALLY OPERATED CHECK VALVE	Symbol	
AZ5200	<p>When open, allows oil flow in both directions.</p> <p>When closed, allows oil flow in one direction only, holding the load in the other one.</p>		

Model	SINGLE WAY FLOW REGULATING VALVE	Symbol	
AZ5255	<p>Similar to AZ5200, allows free oil flow in one direction and in the other, flow can be regulated or completely closed.</p>		

Model	CHECK VALVE	Symbol	
AZ5500	<p>Allows oil flow in one direction only.</p>		

Model	PRESSURE RELIEF VALVE	Symbol	
AZ5600	<p>Regulates the pressure in the hydraulic circuit.</p> <p>From 50 to 700 bar. Supplied with a 0,9 metre return line hose kit.</p>		

Model	PILOT OPERATED CHECK VALVE	Symbol	
AZ5700	<p>Load holding valve used with double-acting cylinders which is released by pilot pressure from the return line.</p>		

SADDLES



TILTING SADDLES AZ04 - CATS

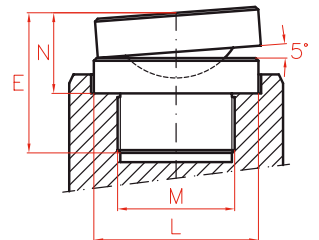
- ✓ Recommended for high side-load applications.
- ✓ These saddles allow up to 5° tilt angle.
- ✓ Push-in or threaded to suit different cylinder models.

HOLLOW SADDLES AZ05

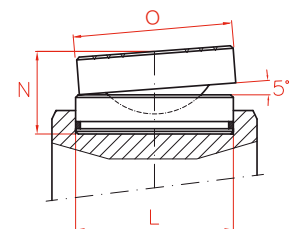
- ✓ Used in hollow piston cylinders.
- ✓ Specially used in pulling operations and as support.
- ✓ These saddles can be plain, threaded or solid.



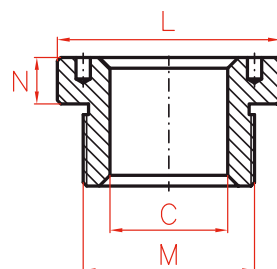
AZ04 THREADED TILTING SADDLES



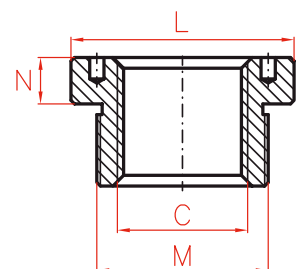
AZ04 - CATS TILTING SADDLES



AZ05 HOLLOW SADDLES



Standard Plain



Optional Internal Thread



SADDLES



Type **AZ04-05, CATS**

Capacity -

Max. pressure **700 bar**

AZ04 - THREADED TILTING SADDLES

Model	L	M	N	E	Weight	Cylinder Model
LARZEP	mm		mm	mm	kg	
AZ0420	28	1"-8	29	43	0,2	SM010-D010
AZ0423	35	1"-8	29	49	0,3	SM015-D020
AZ0421	45	1 1/2"-16	28	50	0,4	SM023-SM030-D030
AZ0422	61	1 3/4"-12	38	58	0,7	D050-D075-D100
AZ0424	88	2 1/2"-12	47	82	2,5	D150
AZ0425	111	2 1/2"-12	52	107	4,5	D200
AZ0431	34	M28 x 1,5	29	44	0,3	SH012
AZ0432	48	1 9/16"-16	29	46	0,5	SH022
AZ0433	55	1 13/16"-16	37	57	0,6	SH030-SAH030-DH030-DAH030
AZ0434	80	2 3/4"-16	47	67	2,3	SH060-SAH060-DH060-DAH060
AZ0435	116	2 1/2"-12	52	76	5,5	SH100-SAH100-DH100-DAH100

AZ04 - CATS - TILTING SADDLES

Model	L	N	O	Weight	Cylinder Model
LARZEP	mm	mm	mm	kg	
AZ0401	45	36	-	0,4	SAM030-SP030-SMP030
AZ0402	61	39	-	0,8	SM050-SM075-SAM050-SP050-SMP050-SX050-SX075-DDA050
AZ0404	88	47	-	2,2	SM100-SM140-SAM100-SAM140-SP100-SMP100-SX100-SX150-DDA100
AZ0405	111	52	-	4,0	SM220
CATS50	50	34,0	71	1,0	STC030-STC050-DDC050
CATS100	71	30,0	71	1,5	STC100-DDC100
CATS150	94	39,2	97	3,0	STC140-SSC140-DDC140
CATS200	113	43,0	126	4,4	STC220-SSC220-DDC220
CATS300	140	68,5	175	10,3	STC300-SSC300-DDC300
CATS400	159	78,0	210	17,0	STC400-SSC400-DDC400
CATS500	179	77,0	230	20,0	STC500-SSC500-DDC500
CATS600	194	81,5	250	24,0	STC600-SSC600-DDC600
CATS800	224	86,5	275	32,0	STC800-SSC800-DDC800
CATS1000	249	105,5	300	46,0	STC1000-SSC1000-DDC1000

AZ05 - HOLLOW SADDLES

Standard Plain					Cylinder Model	Optional Threaded				
Model	C	L	M	N		Model	C	L	M	N
LARZEP	mm	mm		mm		LARZEP		mm		mm
AZ0531	19,5	34	M28 x 1,5	7	SH012	AZ0551	3/4"-16	34	M28 x 1,5	7
AZ0532	27,0	48	1 9/16"-16	8	SH022-SAH022	AZ0552	1"-8	48	1 9/16"-16	8
AZ0533	33,4	55	1 13/16"-16	9	SH030-SAH030-DH030-DAH030	AZ0553	1 1/4"-7	55	1 13/16"-16	9
AZ0536	56,0	80	2 3/4"-16	12	SH060-SAH060-DH060-DAH060	AZ0556	1 5/8"-5 1/2	80	2 3/4"-16	12
AZ0540	81,0	116	4"-16	13	SH100-SAH100-DH100-DAH100	AZ0560	2 1/2"-8	116	4"-16	13
AZ0545	81,0	135	4 1/4"-16	20	DH150	AZ0565	2 1/2"-8	135	4 1/4"-16	20

AZ04-05, CATS ACCESSORIES

FITTINGS AND MANIFOLDS

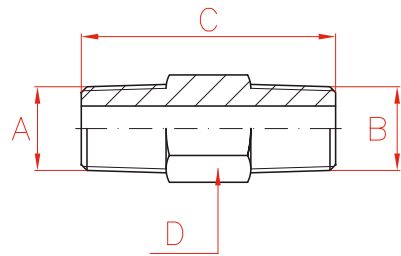


✓ Wide range of fittings and manifolds for multiple applications.

HEXAGON NIPPLE



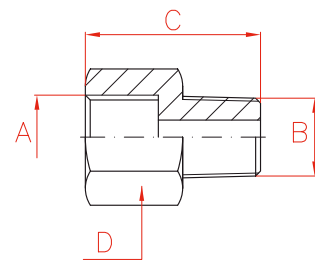
Model	A	B	C	D
LARZEP			mm	mm
AZ1102	3/8"-NPT	3/8"-NPT	45	19
AZ1103	3/8"-NPT	3/8"-NPT	66	19
AZ1104	3/8"-NPT	3/8"-NPT	100	22



ADAPTOR



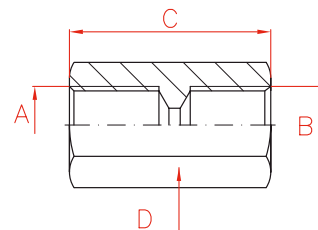
Model	A	B	C	D
LARZEP			mm	mm
AZ1112	3/8"-BSP	3/8"-NPT	36	27
AZ1113	3/8"-NPT	1/4"-BSP	36	27
AZ1114	3/8"-NPT	3/8"-BSP	36	27
AZ1122	1/2"-NPT	3/8"-NPT	43	30
AZ1123	1/2"-NPT	3/8"-BSP	45	30
AZ1124	1/4"-NPT	1/2"-NPT	28	27
AZ1125	1/4"-NPT	3/8"-BSP	36	27
AZ1126	3/8"-BSP	1/2"-NPT	48	24



COUPLING



Model	A	B	C	D
LARZEP			mm	mm
AZ1142	3/8"-NPT	3/8"-BSP	45	27
AZ1143	3/8"-NPT	3/8"-NPT	45	27
AZ1145	3/8"-NPT	1/2"-NPT	45	30





Type

AZ1

Capacity

-

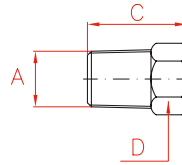
Max. pressure

700 bar

PLUG



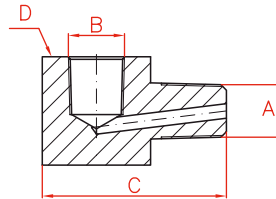
Model	A	C	D
LARZEP		mm	mm
AZ1182	3/8"-NPT	24	18



ADAPTOR ELBOW



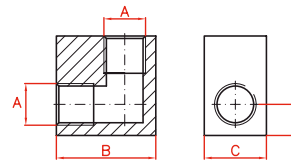
Model	A	B	C	D
LARZEP			mm	mm
AZ1511	3/8"-NPT	3/8"-BSP	51	30
AZ1512	3/8"-NPT	3/8"-NPT	51	30
AZ1513	3/8"-NPT	1/2"-NPT	51	32



ELBOW



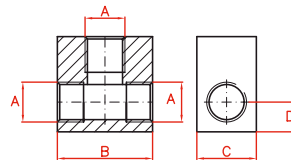
Model	A	B	C	D
LARZEP		mm	mm	mm
AZ1202	3/8"-NPT	40	25	12,5



TEE



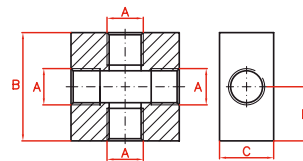
Model	A	B	C	D
LARZEP		mm	mm	mm
AZ1242	3/8"-NPT	40	25	12,5



CROSS



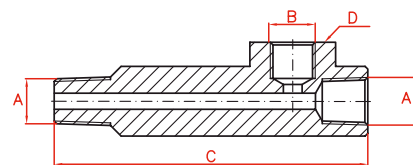
Model	A	B	C	D
LARZEP		mm	mm	mm
AZ1282	3/8"-NPT	50	25	24



GAUGE ADAPTOR



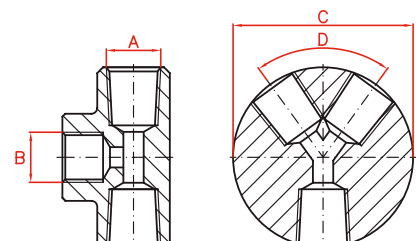
Model	A	B	C	D
LARZEP			mm	mm
AZ1501	3/8"-NPT	3/8"-BSP	117	35
AZ1502	3/8"-NPT	1/4"-NPT	98	35
AZ1504	3/8"-NPT	1/2"-NPT	117	35
AZ1507	3/8"-NPT	1/4"-BSP	98	35



MANIFOLDS



Model	A	B	C	D	Ports
LARZEP			mm	°	No.
AZ1602	3/8"-NPT	1/2"-NPT	62	90°	2
AZ1604	3/8"-NPT	1/2"-NPT	82	60°	4
AZ1606	3/8"-NPT	1/2"-NPT	102	48°	6



PRESSURE GAUGES



- ✓ High accuracy gauges, $\pm 1,6$ % full scale.
- ✓ Essential for monitoring working pressure or force.
- ✓ Glycerine filled gauges.
- ✓ Available as system pressure gauges or as dual scale gauges to measure load on specific cylinders.
- ✓ Digital pressure gauge AVD10008.



AZ1
FITTINGS AND MANIFOLDS



P.92

AP2
Hoses



P.84



Type **AV - AVD - AY**

Capacity **10 - 60 ton**

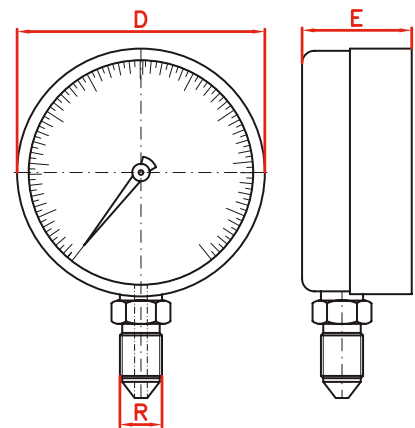
Max. pressure **0 - 1.000 bar**



Digital pressure gauge: **AVD10008**
Thread: 1/4"-BSP
Gauge adaptor: **AZ1507**

WARNING

Do not exceed the 70% of the nominal capacity of the gauge.



Used with	Model	End of Scale			Scale	D	E	R	Gauge Adaptor
		ton	bar	psi					
All Cylinders	AV10007	-	1.000	14.500	50 bar / 500 psi	63	31	1/4"-NPT	AZ1502
	AV10011	-	1.000	14.500	20 bar / 200 psi	80	35	1/2"-NPT	AZ1504
	AVD10008	-	1.000	14.500	0,1	80	33	1/4"-NPT	AZ1507
Press 10 ton	AY01008	10	-	-	0,5	80	35	3/8"-BSP	AZ1501
Press 20 ton	AY02008	20	-	-	0,5	80	35	3/8"-BSP	AZ1501
Press 30 ton	AY03008	30	-	-	2	80	35	3/8"-BSP	AZ1501
Press 60 ton	AY06010	60	-	-	2	100	35	3/8"-BSP	AZ1501