

HYDRAULIC PUMPS

LARZEP Pumps are available in a wide range of models: Hand Pumps, Air Hydraulic Pumps, Modular Pumps, Manual, Electric and Air Hydraulic Powerpacks, Hydrotest Hand Pumps and Air Pumps.

- ✓ 700 bar pumps as standard.
- ✓ Air and hand operated hydrotest pumps.
- ✓ Wide range of reservoirs, from 280 cm³ in hand pumps up to 25 litres in standard powerpacks.



PUMPS



Models	Pump type	Max. Oil Capacity litre	Max. Flow Rate l/min		Page
W	Hydraulic Single Acting Hand Pumps	6,5	4,9 cm ³ /stroke		66
X	Hydraulic Double Acting Hand Pumps	6,5	4,9 cm ³ /stroke		66
WA	Hydraulic Aluminium Hand Pumps	0,8	3,1 cm ³ /stroke		68
Z - ZR	Air Hydraulic Pumps 700 bar	20	0,14		70
HBM	Hydraulic Electric Powerpacks Manual Valve	25	3,28		72
HBE	Hydraulic Electric Powerpacks Solenoid Valve	25	3,28		74
WI	Modular Hand Pumps	–	36		76
HAP	Air Driven Hydrotest Pumps	7	16,2 cm ³ /stroke		78
WAP - WIP	Hydrotest Hand Pumps	100	20 cm ³ /stroke		80

HYDRAULIC HAND PUMPS



W Single acting



X Double acting

- ✓ **W** series pumps are for use with **Single Acting** cylinders.
- ✓ **X** series pumps are fitted with 4-way 3 position valve for use with **Double Acting** cylinders.
- ✓ The pump range includes single and two speed models.
- ✓ Two speed models provide rapid cylinder advance until contact is made with the load.
- ✓ Hydraulic port on all models is 3/8"-NPTF female.
- ✓ W and X series pumps are fitted with internal safety valves to prevent overpressure.
- ✓ W26507 and X26507 have a rectangular tank.
- ✓ WP21007 and XP21007 models are foot pedal operated.



WP21007 pump, foot pedal operated.



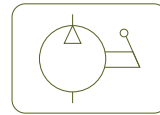
W26507, X26507 pumps.



HYDRAULIC HAND PUMPS



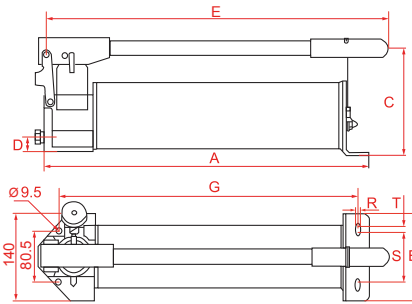
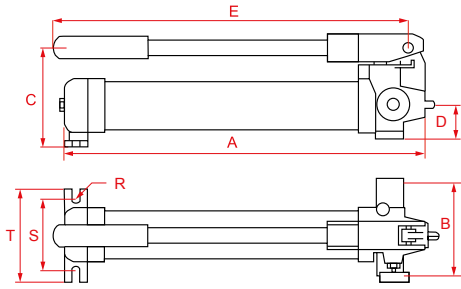
Type	W - X
Capacity	0,28 - 6,5 litres
Max. pressure	700 bar



SINGLE ACTING W

W20307 / W10607 / W20807 / W11407 / W21807

W22607 / W24507

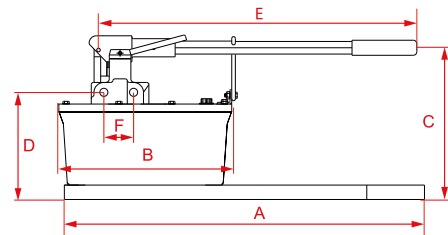
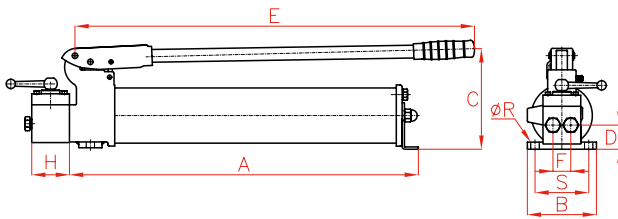


DOUBLE ACTING X

X22607 / X24507

SINGLE / DOUBLE ACTING W - X

W26507 / X26507



SINGLE ACTING

Model	Speeds	Usable oil	Handle effort	Oil displacement / stroke (cm ³)		Pressure rating (bar)		A	B	C	D	E	G	R	S	T	Weight	Model
LARZEP	No.	cm ³	kg	1 st Stage	2 nd Stage	1 st Stage	2 nd Stage	mm	mm	mm	mm	mm	mm	mm	mm	mm	kg	LARZEP
W20307	2	280	40	7	1,0	20	700	331	138	124	44	380	-	7	38	66	5,5	W20307
W10607	1	640	43	-	3,2	-	700	557	137	144	55	608	-	-	-	90	7,3	W10607
W20807	2	640	45	13	2,8	17	700	563	137	144	55	608	-	-	-	90	8,2	W20807
WP21007	2	1.000	43	12	2,0	50	700	550	176	445*	52	540	-	9,0	185,0	176	9,0	WP21007
W11407	1	1.400	43	-	3,2	-	700	526	137	174	55	608	-	-	-	106	10,9	W11407
W21807	2	1.800	49	13	2,8	21	700	548	147	174	23	558	-	10,5	82,0	140	11,3	W21807
W22607	2	2.600	41	46	4,0	28	700	656	140	186	41	680	616	10,5	80,5	10	12,7	W22607
W24507	2	4.450	43	46	4,0	28	700	574	146	189	41	643	528	10,5	80,5	10	18,1	W24507
W26507	2	6.500	37	126	4,9	28	700	635	312	233	191	640	-	-	-	-	20,0	W26507

* with the pedal completely open.

DOUBLE ACTING

Model	Speeds	Usable oil	Handle effort	Oil displacement / stroke (cm ³)		Pressure rating (bar)		A	B	C	D	E	F	H	R	S	Weight	Model
LARZEP	No.	cm ³	kg	1 st Stage	2 nd Stage	1 st Stage	2 nd Stage	mm	mm	mm	mm	mm	mm	mm	mm	mm	kg	LARZEP
XP21007	2	1.000	43	12,0	2,0	50	700	550	176	445*	52	540	-	-	9,0	185	9,0	XP21007
X22607	2	2.600	41	46,0	4,0	27	700	654	140	186	54	680	-	125	9,5	80,5	14,3	X22607
X24507	2	4.450	43	46	4,0	27	700	570	150	189	41	643	110	130	10,5	99,5	19,6	X24507
X26507	2	6.500	37	126,0	4,9	28	700	635	312	233	193	644	70	-	-	-	20,8	X26507

HYDRAULIC ALUMINIUM HAND PUMPS



- ✓ WA series pumps are for use with Single Acting cylinders.
- ✓ Lightweight aluminium pumps, ideal for easy portability and handling.
- ✓ Two speed models to provide rapid cylinder advance until contact is made with the load.
- ✓ Hydraulic outlet port: 3/8"-NPT female.
- ✓ Fitted with safety valves to prevent overpressure.
- ✓ Fitted with handle clip for ease of carrying.

Model	Usable oil cm ³	Handle effort kg	Oil displacement per stroke (cm ³)		Pressure rating (bar)		Weight kg
			1 st Stage	2 nd Stage	1 st Stage	2 nd Stage	
LARZEP							
WA20507	400	29	13,4	2,6	20	700	3,7
WA21107	810	43	15,0	3,1	20	700	5,0

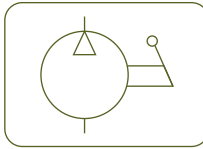


AZ3

Coupler 3/8"-18 NPT



P.86



AV - AVD - AY

Pressure Gauges



P.94

HYDRAULIC ALUM. HAND PUMPS



Type

WA

Capacity

0,4 - 0,8 litres

Max. pressure

700 bar

W

Single Acting Hand Pumps



P.66

X

Double Acting Hand Pumps



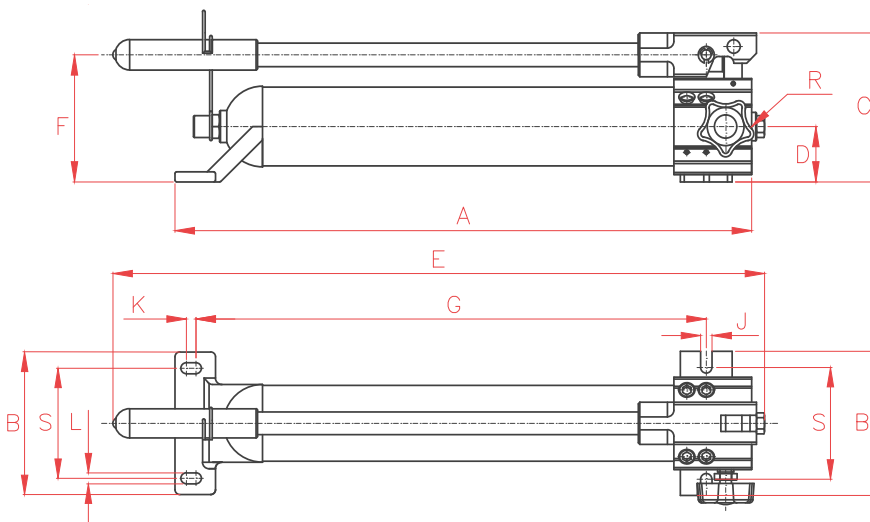
P.66

AP2

Hoses



P.84

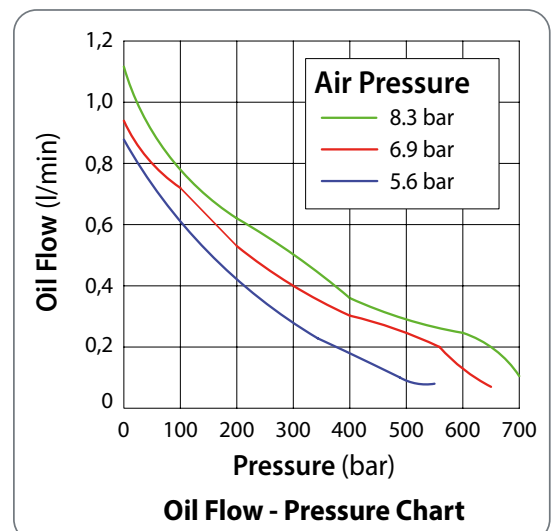


A	B	C	D	E	F	G	H	J	K	L	R	Model
mm	mm	mm	mm	mm	mm	mm	mm	mm	mm	mm	NPT	LARZEP
361	140	141	51	435	124	295,0	108	11,2	10	11,2	3/8"-NPT	WA20507
556	140	141	51	625	124	489,5	108	11,2	10	11,2	3/8"-NPT	WA21107

AIR HYDRAULIC PUMPS

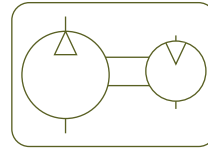
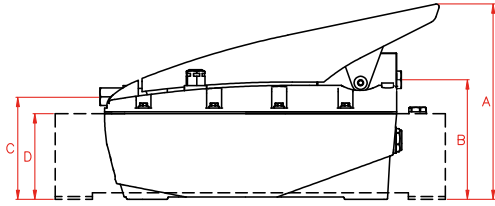


- ✓ On Z models for Single Acting cylinders, the pedal acts as the control valve, by controlling advance, hold and retract functions. In 'hold' mode, the pump maintains the output pressure.
- ✓ On ZR models, operation is controlled by a 3 metre remote pendant.
- ✓ Double Acting models are fitted with a manual 4-way 3 position control valve.
- ✓ The hydraulic port on all models is 3/8"-NPT female.
- ✓ Working pressure 700 bar.
- ✓ 4, 7, 10 and 20 litre pumps are fitted with steel tanks.
- ✓ Optional steel base plate available for Z12107 part number.
- ✓ Air Inlet Port: 1/4" BSP female.
- ✓ Air Pressure: 2,8 - 10 bar.
- ✓ Air Consumption: 400 N l/min.
- ✓ 700 bar Flow Rate: 0,14 l/min.
- ✓ Sound level: 75 dBA



Models:

- Z12107
- Z14007
- Z17007
- Z19107
- Z19207



Type

Z - ZR

Capacity

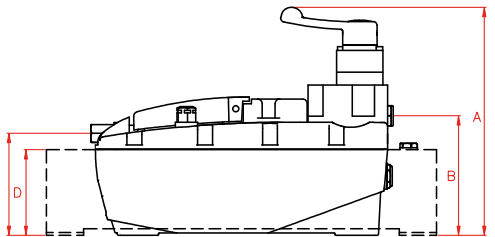
2,1 - 20 litres

Max. pressure

700 bar

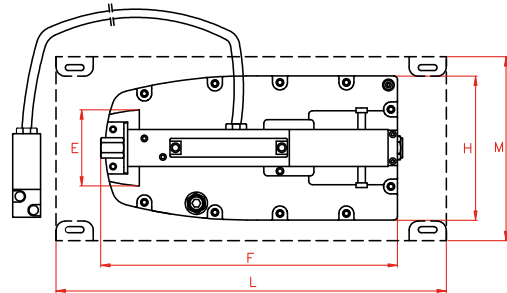
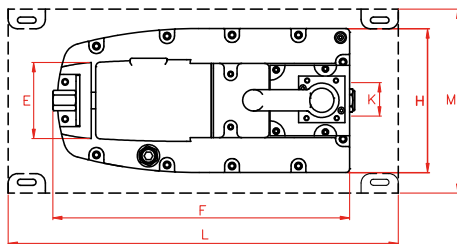
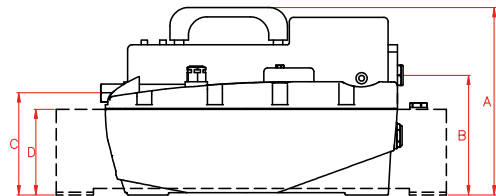
Models:

- Z22107
- Z24007
- Z27007
- Z29107
- Z29207



Models:

- ZR12107
- ZR14007
- ZR17007
- ZR19107
- ZR19207
- ZR22107
- ZR24007
- ZR27007
- ZR24007
- ZR27007



Type	Oil capacity	Model	A	B	C	D	E	F	G	H	K	L	M	Weight
	litres													
Single Acting	2,1	Z12107	209	127	109	-	82	320	364	155	-	-	-	7,6
Single Acting	4,0	Z14007	256	173	154	137	82	320	364	155	-	350	178	14,4
Single Acting	6,9	Z17007	256	173	154	137	82	320	364	155	-	415	206	19,2
Single Acting	10,0	Z19107	278	198	180	162	82	320	364	155	-	430	220	21,8
Single Acting	20,0	Z19207	278	198	180	162	82	320	364	155	-	500	356	29,1
Double Acting	2,1	Z22107	245	131	110	-	82	320	-	155	36	-	-	8,4
Double Acting	4,0	Z24007	290	176	154	137	82	320	-	155	36	350	178	15,2
Double Acting	6,9	Z27007	290	176	154	137	82	320	-	155	36	415	206	20,4
Double Acting	10,0	Z29107	315	201	180	162	82	320	-	155	36	430	220	23
Double Acting	20,0	Z29207	315	201	180	162	82	320	-	155	36	500	356	30,3
Single Acting	2,1	ZR12107	217	129	111	-	82	316	-	155	-	-	-	8,6
Single Acting	4,0	ZR14007	261	173	155	137	82	316	-	155	-	350	178	15,2
Single Acting	6,9	ZR17007	261	173	155	137	82	316	-	155	-	415	206	20,4
Single Acting	10,0	ZR19107	286	198	180	162	82	316	-	155	-	430	220	23
Single Acting	20,0	ZR19207	286	198	180	162	82	316	-	155	-	500	356	30,3
Double Acting	2,1	ZR22107	213	127	109	-	82	325	-	155	36	-	-	8,6
Double Acting	4,0	ZR24007	258	172	154	137	82	325	-	155	36	350	178	15,2
Double Acting	6,9	ZR27007	258	172	154	137	82	325	-	155	36	415	206	20,4

HYDRAULIC ELECTRIC PUMPS (MANUAL VALVE)

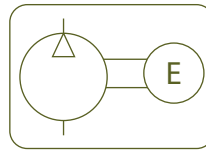
- ✓ Manual directional control valves.
- ✓ Also available HBE model, remote pendant controlled solenoid valves.
- ✓ The manual control valve is easily converted from double acting to single acting operation.
- ✓ Internal safety valve set at 700 bar to prevent overpressure.
- ✓ External adjustable pressure relief valve.
- ✓ For use with single acting or double acting cylinders for heavy lifting or production applications.
- ✓ Options: roll bars, glycerine pressure gauge and push button remote motor control.

NOTE: Pressure gauge is not included.

AZ89
Hydraulic Oil



P.85

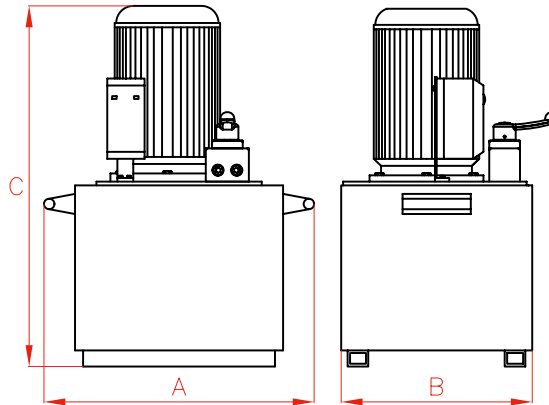


Type **HBM**

Capacity **5 - 25 litres**

Max. pressure **700 bar**

Capacity	A	B	C
l	mm	mm	mm
5	330	230	500
8,5	350	250	525
12,5	370	290	550
25	470	360	670



ELECTRIC PUMPS (MANUAL VALVE)

Tank Size	Flow 700 bar	Flow 50 bar	230V-1ph-50Hz	400V-3ph-50/60Hz	Motor Power	Pump Weight
			litres	l/min		
5	0,36	4,00	HBM7241	HBM7244	0,75	21
8,5	0,54	5,90	HBM3341	HBM3344	1,10	30
12,5	0,54	5,90	HBM3441	HBM3444	1,10	38
12,5	0,82	8,64	HBM4441	HBM4444	1,10	40
25	1,64	14,00	HBM5541	HBM5544	2,20	78
25	3,28	11,77	-	HBM6544	5,50	90

PUMP OPTIONS add letter behind pump model number



B Remote Pendant

- ✓ With 3 metre long cable.
- ✓ For remote operation of motor in HBM series, 'ON' button starts motor and stops when button is released.



C Roll Bar

- ✓ Protects pump and components: motor, valves, etc
- ✓ For easy portability.
- ✓ Different sizes available.



G Glycerine Pressure Gauge

- ✓ ± 1,6 % full scale
- ✓ Reliable pressure measurement.
- ✓ Pressure range: 0-1000 bar.

HYDRAULIC ELECTRIC PUMPS (SOLENOID VALVE)

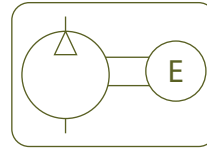
- ✓ Remote pendant controlled solenoid valves with up, down and emergency stop button.
- ✓ Internal safety valve set at 700 bar to prevent overpressure.
- ✓ External adjustable pressure relief valve.
- ✓ For use with single acting or double acting cylinders for heavy lifting or production applications.
- ✓ HBE series are supplied with the a 3 metre remote pendant as standard, with up, down and emergency stop button.
- ✓ Options: roll bars and glycerine pressure gauge.

NOTE: Pressure gauge is not included.

AZ89
Hydraulic Oil



P.85

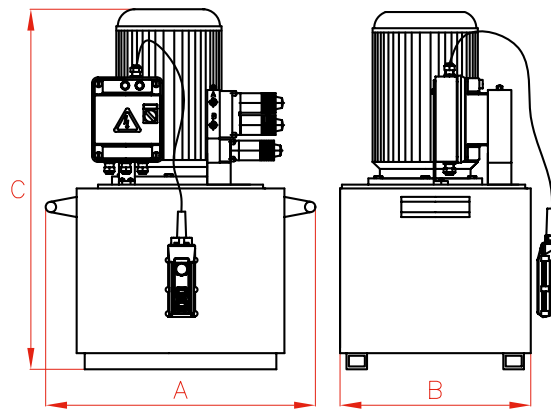


Type **HBE**

Capacity **5 - 25 litres**

Max. pressure **700 bar**

Capacity	A	B	C
l	mm	mm	mm
5	370	230	500
8,5	390	310	525
12,5	410	390	550
25	470	360	670



ELECTRIC PUMPS (SOLENOID VALVE)

Tank Size	Flow 700 bar	Flow 50 bar	230V-1ph-50Hz	400V-3ph-50/60Hz	Motor Power	Pump Weight
			litres	l/min		
5	0,36	4,00	HBE7271	HBE7274	0,75	27
8,5	0,54	5,90	HBE3371	HBE3374	1,10	35
12,5	0,54	5,90	HBE3471	HBE3474	1,10	43
12,5	0,82	8,64	HBE4471	HBE4474	1,10	45
25	1,64	14,00	HBE5571	HBE5574	2,20	83

PUMP OPTIONS add letter behind pump model number



- C** Roll Bar
- ✓ Protects pump and components: motor, valves, etc
- ✓ For easy portability.
- ✓ Different sizes available.



- G** Glycerine Pressure Gauge
- ✓ ± 1,6 % full scale
- ✓ Reliable pressure measurement.
- ✓ Pressure range: 0-1000 bar.

MODULAR HAND PUMPS

- ✓ Wide range with different working pressures.
- ✓ Lightweight with tapped holes in the base for easy mounting.
- ✓ All models are black nitrided.
- ✓ Designed for use with external reservoirs.
- ✓ Operating lever included.
- ✓ Tank is not included.

AV - AVD - AY
Pressure Gauges

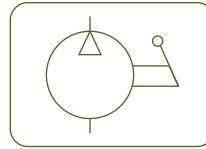
P.94



AP2
Hoses



P.84



Type

WI

Capacity

-

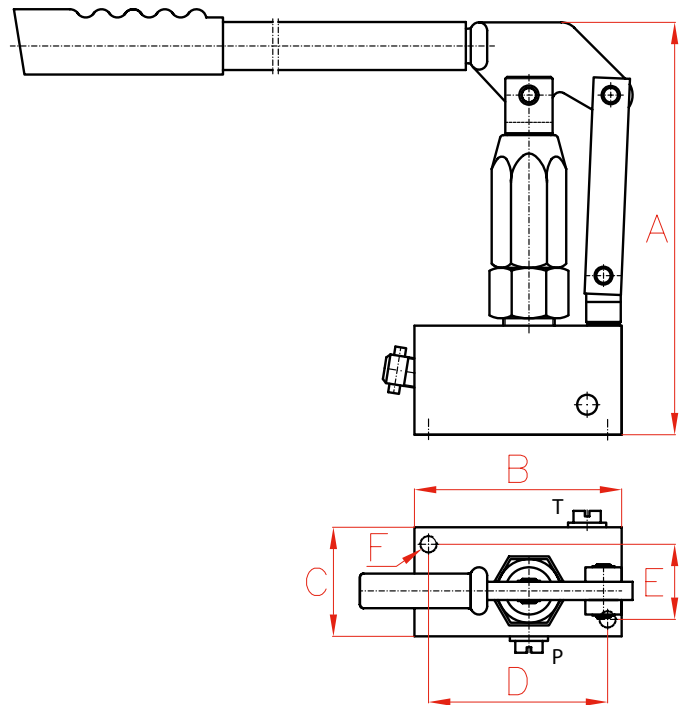
Max. pressure

40 - 700 bar

AZ3
Coupler 3/8"-18 NPT



P.86



Working Pressure	Model	Max. Pressure	Piston ø	Oil per Stroke	Port Size	A	B	C	D	E	F	Weight
bar	LARZEP	bar	mm	cm ³	NPT	mm	mm	mm	mm	mm	UNC	kg
700	WI1400	1.400	10	3	3/8"-18NPT	230	114	57	98,5	41,3	3/8"-16UNC	5,3
400	WI700	700	13	4	3/8"-18NPT	230	114	57	98,5	41,3	3/8"-16UNC	5,8
200	WI210	300	19	10	3/8"-18NPT	230	114	57	98,5	41,3	3/8"-16UNC	5,3
100	WI100	200	26	18	3/8"-18NPT	230	114	57	98,5	41,3	3/8"-16UNC	5,7
40	WI040	80	38	36	3/8"-18NPT	230	114	57	98,5	41,3	3/8"-16UNC	7,0

AIR DRIVEN HYDROTEST PUMPS



- ✓ 10 Models Available, from 70 bar to 2.900 bar.
- ✓ Engineered and designed for easy operation.
- ✓ Compact and lightweight steel frame for full protection and handling.
- ✓ Fully integrated, protected and calibrated pressure gauge.
- ✓ Clearly labelled controls for improved safety.
- ✓ Supplied with air inlet connector, air filter, air pressure regulator, air lubricator, air pressure gauge, air pressure limit valve, pump on/off control, oil pressure gauge.
- ✓ All pumps can work with water or oil.
- ✓ All pumps supplied complete with a full test certificate as standard.
- ✓ High pressure fittings and any length of high pressure hose available from stock.

Hydraulic Pressure Gauge: Dual scale bar/psi

Oil / Water Reservoir: 7 litres

Working Air Pressure: 1,7 to 6,9 bar

Air Inlet Port: 1/2" NPTF Female

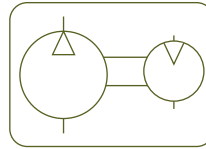
Air Consumption: 0,79 m³/min

Sound Level: 90 dBA

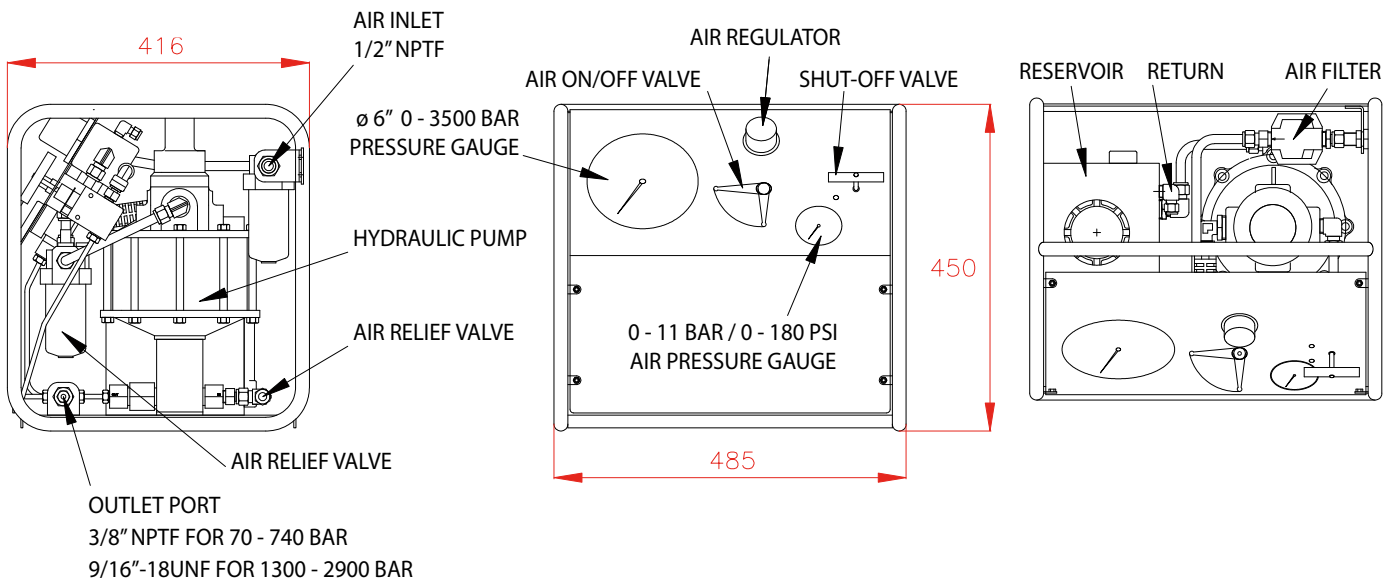
Weight: 30 kg



HYDROTEST AIR PUMPS



Type	HAP
Capacity	7 litres
Max. pressure	70 - 2.900 bar



HYDROTEST PUMPS

Hydrotest Pump	Maximum Hydraulic Pressure (bar)			Flow (l/min)			Outlet Port
	Air 6.9 bar	Air 5.1 bar	Air 4.1 bar	20% Max. P	50% Max. P	80% Max. P	
LARZEP							Female
HAP0070	70	55	40	16,2	11,0	3,7	3/8" NPT
HAP0130	130	100	80	8,5	6,0	3,9	3/8" NPT
HAP0180	180	150	100	6,1	4,7	2,6	3/8" NPT
HAP0250	250	200	150	4,1	3,1	2,0	3/8" NPT
HAP0400	400	320	240	2,6	1,8	1,2	3/8" NPT
HAP0740	740	600	440	1,2	0,9	0,6	3/8" NPT
HAP1300	1.300	1.000	770	0,65	0,5	0,3	9/16"-18UNF
HAP1900	1.900	1.500	1.100	0,4	0,3	0,2	9/16"-18UNF
HAP2900	2.900	2.300	1.800	0,25	0,2	0,1	9/16"-18UNF

HYDROTEST HAND PUMPS



- ✓ Tanks from 12 to 100 litres.
- ✓ 13 models available, from 25 bar to 1.300 bar.
- ✓ Engineered and designed for easy operation.
- ✓ WAP models with cast iron or mild steel frame.
- ✓ WIP models with stainless steel frame. Used by the Chemical industry or when aggressive liquids are used.
- ✓ Supplied with pressure gauge and control valve.
- ✓ All pumps can work with water and oil.
- ✓ Pressure gauge: Dual scale bar / psi. / Class 1.6 up to 200 bar and Class 1.0 from 300 to 1.300 bar.

WAP0025, WAP0035, WAP0045, WAP0050, WAP0100

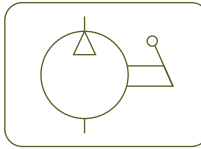
- ✓ Manufactured in cast iron for heavy duty and professional uses.
- ✓ Supplied with pressure gauge ø60 mm and double control valve, except model WAP0035 that is supplied with single control valve.

WAP0300, WAP0500, WAP1000, WAP1300

- ✓ Hand pumps used for high pressure hydrostatic tests.
- ✓ 2 stage pumps with 100 litres tank manufactured in mild steel.
- ✓ Supplied with pressure gauge ø100 mm and control valve.



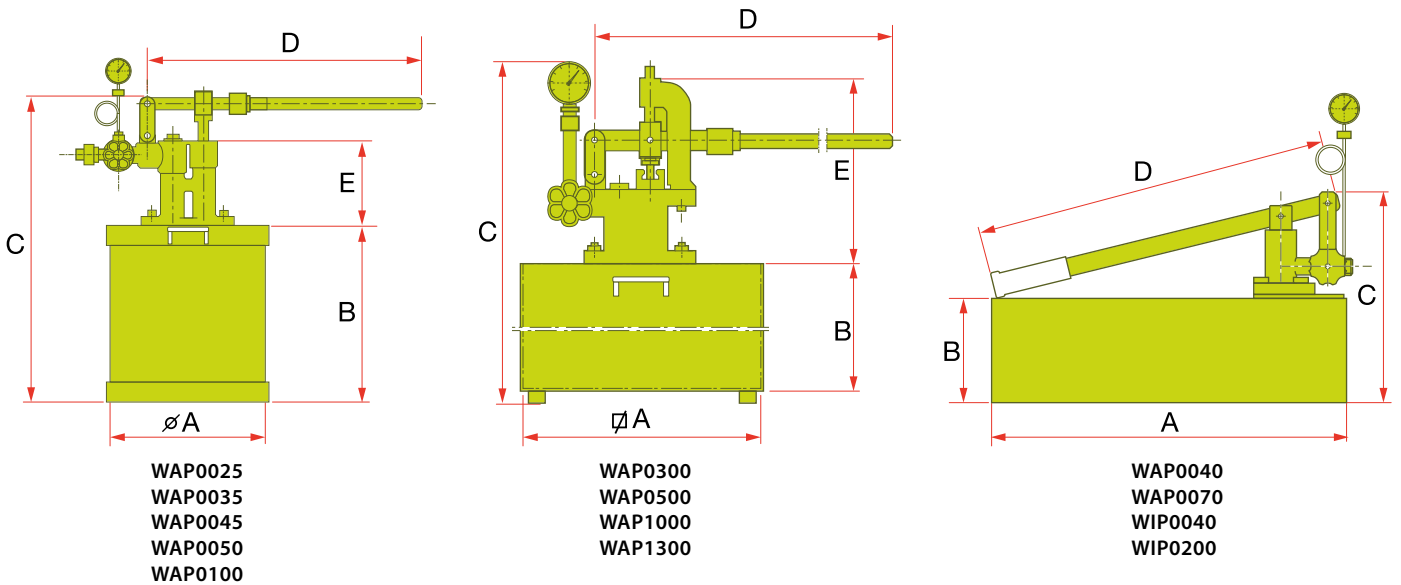
WAP0040, WAP0070, WIP0040, WIP0200



- ✓ Lightweight hand pumps manufactured in mild steel (WAP) and stainless steel (WIP) for use on bench in workshop hydrostatic tests.
- ✓ Supplied with pressure gauge ø60 mm, control valve and 13 litre tank.
- ✓ WIP0040 and WIP0200 models have stainless steel tanks. Used by the Chemical industry or when aggressive liquids are used.
- ✓ WAP0040 and WIP0040 pumps are supplied with 1.5 metre hose. These pumps are normally used on plumbing for heating plant testing.



Type	WAP - WIP
Capacity	12 - 100 litres
Max. pressure	25 - 1.300 bar



CAST IRON AND MILD STEEL PUMPS - WAP

Hydrotest Pump	Max. Pressure	Oil Capacity	Flow / stroke	Material	Outlet Port	A	B	C	D	E	Weight
LARZEP	bar	litres	cc		BSP	mm	mm	mm	mm	mm	kg
WAP0025	25	12	11	Cast iron	3/8" Male	ø255	272	450	420	120	10
WAP0035	35	12	14	Cast iron	1/2" Female	ø255	272	430	350	100	8
WAP0045	45	21	14	Cast iron	3/8" Male	ø260	397	558	420	150	12
WAP0050	50	38	20	Cast iron	3/8" Male	ø390	397	558	683	150	22
WAP0100	100	38	20	Cast iron	3/8" Male	ø390	397	558	683	150	22
WAP0040	40	13	18	Mild steel	1/2" Male	500 x 190	140	280	500	-	8
WAP0070	70	13	11	Mild steel	1/2" Female	500 x 190	140	295	700	-	9
WAP0300	300	100	18 / 3,5	Mild steel	1/2" Female	500 x 500	400	800	800	400	54
WAP0500	500	100	18 / 3,5	Mild steel	1/2" Female	500 x 500	400	800	800	400	54
WAP1000	1.000	100	18 / 3,5	Mild steel	1/2" Female	500 x 500	400	800	1.000	400	60
WAP1300	1.300	100	18 / 3,5	Mild steel	1/2" Female	500 x 500	400	800	1.000	400	60

STAINLESS STEEL PUMPS - WIP

Hydrotest Pump	Max. Pressure	Oil Capacity	Flow / stroke	Material	Outlet Port	A	B	C	D	Weight
LARZEP	bar	litres	cc		BSP	mm	mm	mm	mm	kg
WIP0040	40	13	18	Bronze & SS	1/2" Male	500 x 190	140	280	500	8
WIP0200	200	13	18	SS	1/2" Female	500 x 190	140	295	700	14