

## HYDRAULIC ELECTRIC PUMPS (MANUAL VALVE)

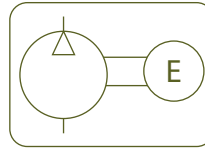


- ✓ Manual directional control valves.
- ✓ Also available HBE model, remote pendant controlled solenoid valves.
- ✓ The manual control valve is easily converted from double acting to single acting operation.
- ✓ Internal safety valve set at 700 bar to prevent overpressure.
- ✓ External adjustable pressure relief valve.
- ✓ For use with single acting or double acting cylinders for heavy lifting or production applications.
- ✓ Options: roll bars, glycerine pressure gauge and push button remote motor control.

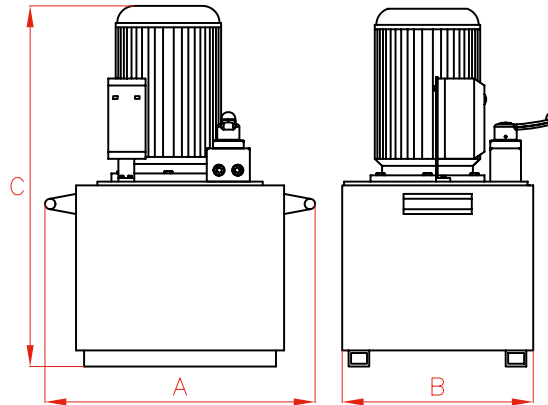
NOTE: Pressure gauge is not included.

**AZ89**  
Hydraulic Oil

P.85

Type **HBM**Capacity **5 - 25 litres**Max. pressure **700 bar**

Capacity	A	B	C
l	mm	mm	mm
5	330	230	500
8,5	350	250	525
12,5	370	290	550
25	470	360	670

**ELECTRIC PUMPS (MANUAL VALVE)**

Tank Size	Flow 700 bar	Flow 50 bar	230V-1ph-50Hz	400V-3ph-50/60Hz	Motor Power	Pump Weight
litres	l/min	l/min	4/3 D/A	4/3 D/A	kW	kg
5	0,36	4,00	<b>HBM7241</b>	<b>HBM7244</b>	0,75	21
8,5	0,54	5,90	<b>HBM3341</b>	<b>HBM3344</b>	1,10	30
12,5	0,54	5,90	<b>HBM3441</b>	<b>HBM3444</b>	1,10	38
12,5	0,82	8,64	<b>HBM4441</b>	<b>HBM4444</b>	1,10	40
25	1,64	14,00	<b>HBM5541</b>	<b>HBM5544</b>	2,20	78
25	3,28	11,77	–	<b>HBM6544</b>	5,50	90

**PUMP OPTIONS**

add letter behind pump model number

**B Remote Pendant**

- ✓ With 3 metre long cable.
- ✓ For remote operation of motor in HBM series, 'ON' button starts motor and stops when button is released.

**C Roll Bar**

- ✓ Protects pump and components: motor, valves, etc
- ✓ For easy portability.
- ✓ Different sizes available.

**G Glycerine Pressure Gauge**

- ✓  $\pm 1,6\%$  full scale
- ✓ Reliable pressure measurement.
- ✓ Pressure range: 0-1000 bar.