

## HYDRAULIC CHAIN CUTTERS



- ✓ Maximum working pressure 700 bar.
- ✓ CK0016 model includes an integral built-in hand pump.  
Other models are powered by an external hand, air, electric, or petrol pump.
- ✓ CK0216, CK0230 and CK0250 models are double acting, for fast retraction.
- ✓ CK0116 and CK0216 are not equipped with handle.
- ✓ All models are provided with standard female coupler AZ3140.

**Z12107**  
Air Hydraulic Pump



P.70

**HBM**  
Manual Powerpack



P.72

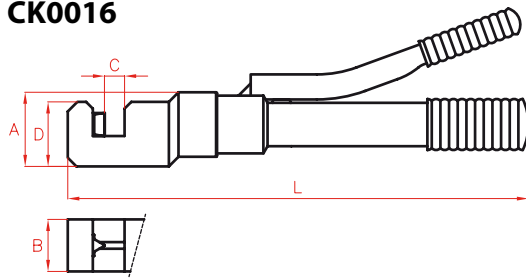
**AP**  
Hydraulic Hoses



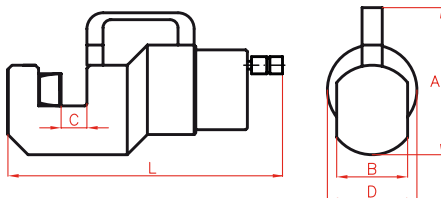
P.84



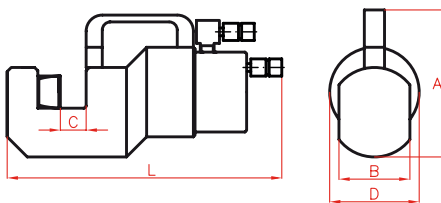
CK0016



CK0116 - CK0130



CK0216 - CK0230 - CK0250



Type	<b>CK</b>
Capacity	<b>13 - 112 ton</b>
Chain	<b>max. 50 mm</b>
Max. pressure	<b>700 bar</b>

Model	Replacement Blades	
	Mobile	Fixed
CK0016	CRK161	CRK162
CK0116	CRK161	CRK162
CK0130	CRK301	CRK302
CK0216	CRK161	CRK162
CK0230	CRK301	CRK302
CK0250	CRK501	CRK502

\* maximum ø

Model	Capacity	Oil Cap.	Weight	A	B	C	D	L	Chain *	Strength	Bar *	Strength
LARZEP	kN	cm <sup>3</sup>	kg	mm	mm	mm	mm	mm	mm	by grades	mm	N/mm <sup>2</sup>
CK0016	135	-	5,8	81,5	54	19,5	68	489	19	28 - 43	19	700
											15	1.000
									14	60 - 80	13	1.400
CK0116	135	38	4,8	81,5	54	19,5	68	290	19	28 - 43	19	700
											15	1.000
									14	60 - 80	13	1.400
CK0130	390	182	16,8	183	88	31	113	360	30	28 - 43	30	700
											25	1.000
									20	60 - 80	20	1.400
CK0216	135	38	8,4	126	54	19,5	81	343	19	28 - 43	19	700
											15	1.000
									14	60 - 80	13	1.400
CK0230	345	161	16,0	183	88	31	113	412	30	28 - 43	30	700
											25	1.000
									20	60 - 80	20	1.400
CK0250	1.120	842	68,0	265	120	52	207	475	50	28 - 43	50	700
											45	1.000
									40	60 - 80	40	1.400
											35	1.600