

LIGHTWEIGHT RESCUE UNIT

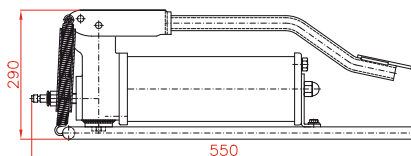


LARZEP advantages

- Lightweight, self contained rescue unit. No need for external power. Can be handled by just one person.
- Consists of a foot operated pump, cutting shears, two spread cylinders and a hydraulic cylinder with extensions and support heads.
- For separating, cutting and pushing, the three basic operations in a rescue.
- The tools are connected individually to the pump via a hydraulic hose, equipped with all the necessary quick-connect fittings.
- The size of the tool enables the user to operate effectively even in hard-to-reach places.
- Two speed pump, for fast approach and automatic changeover when load is contacted.
- Pumping is carried out via the foot pedal, leaving hands free to hold the tool.
- Internal spring provides rapid cylinder retraction.
- The unit is supplied with a storage/carry case equipped with wheels and a retracting handle.

LIGHTWEIGHT RESCUE UNIT	CS45
Pump	WP01205
Cutter	CD045
Spread cylinder	CY0109-CS
Spread cylinder	CY00822-CS
Cylinder	SM00427
Total weight	45 kg

PUMP	Ref. WP01205
Usable oil:	1.200 cm ³
Oil displacement per stroke	
1st stage (20 bar):	13 cm ³
2nd stage (550 bar):	2 cm ³
Weight:	10,6 kg



LIGHTWEIGHT RESCUE UNIT

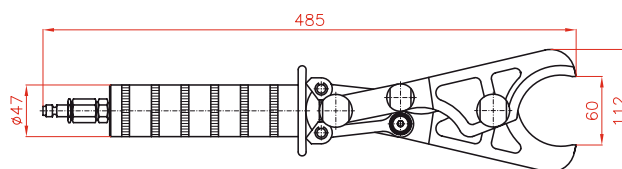
CS

0,7-7 Tn.

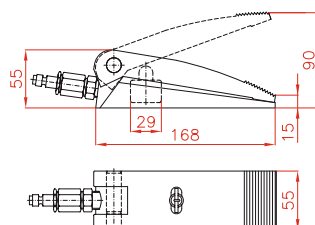
550 bar

AUTOMOTIVE

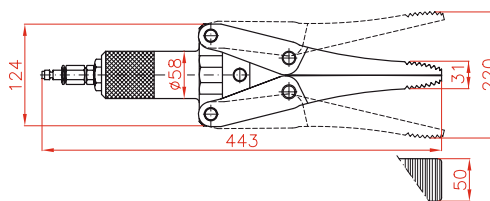
CUTTER	Ref. CD045
Capacity:	7 Tn
Maximum pressure:	550 bar
Clearance:	60 mm
Effective area:	12,5 cm ²
Oil capacity:	43,9 cm ³
Weight:	4,3 kg



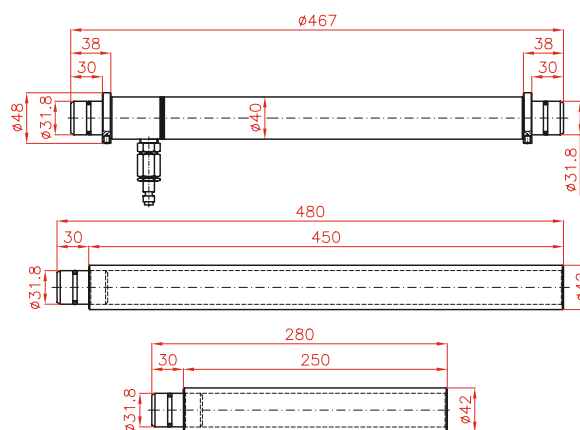
SPREAD CYLINDER	Ref. CY0109-CS
Capacity:	0,7 Tn
Maximum pressure:	700 bar
Closed tip clearance:	15 mm
Open tip clearance:	90 mm
Effective area:	6,6 cm ²
Oil capacity:	10 cm ³
Weight:	1,9 kg



SPREAD CYLINDER	Ref. CY00822-CS
Capacity:	0,8 Tn
Maximum pressure:	550 bar
Closed tip clearance:	31 mm
Open tip clearance:	220 mm
Effective area:	14,5 cm ²
Oil capacity:	76,8 cm ³
Weight:	6,2 kg

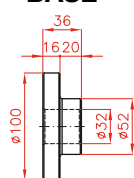


CYLINDER	Ref. SM00427
Capacity:	3,8 Tn
Maximum pressure:	700 bar
Collapsed height:	467 mm
Stroke:	275 mm
Effective area:	7,06 cm ²
Oil capacity:	194,3 cm ³
Weight:	3,6 kg
Extension tubes:	250/400 mm

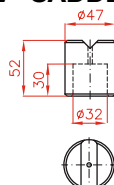


ACCESORIES
"V" saddle
"X" saddle
Base
Handspike
Hose (3 m)

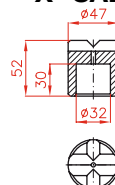
BASE



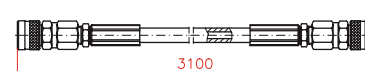
"V" SADDLE



"X" SADDLE



HOSE



HANDSPIKE

